

Our purpose

Working together to achieve the healthiest life possible for everyone in Ayrshire and Arran



Health Improving Care Establishments (HICE)

An Ayrshire Approach

Our values

Caring Safe Respectful


Overview

- **Background to HICE**
- **Development of a local framework**
- **HICE Framework overview**
- **Implementation to date**
- **Next steps**

Background to HICE

- Child health as a priority in Ayrshire
- Inequalities in health in LAAC population
- National drive to consider health improvement framework for LAAC
- Initial pilot work undertaken by City of Edinburgh Council





“By incorporating a holistic, settings based approach to health improvement, there is potential within the care system to address some of the challenges faced by children and young people who are looked after and accommodated.”

Settings based approach

- *Somewhere* where *something* takes place
- Include workplaces, schools, prisons, communities and hospitals
- Each has **physical boundaries**, **individuals within them** and **organisational structures that govern them** that can all be influenced by, and can influence, health and wellbeing



...Care establishments can also be considered a setting

A settings based approach...

- Is achieved by:
 - Creating a safe and supportive healthy living, learning and working environment
 - Integrating care activity within the core activity of the setting
 - Developing better links with the wider community and its resources

Health promotion extends beyond the individual

Benefits of approach

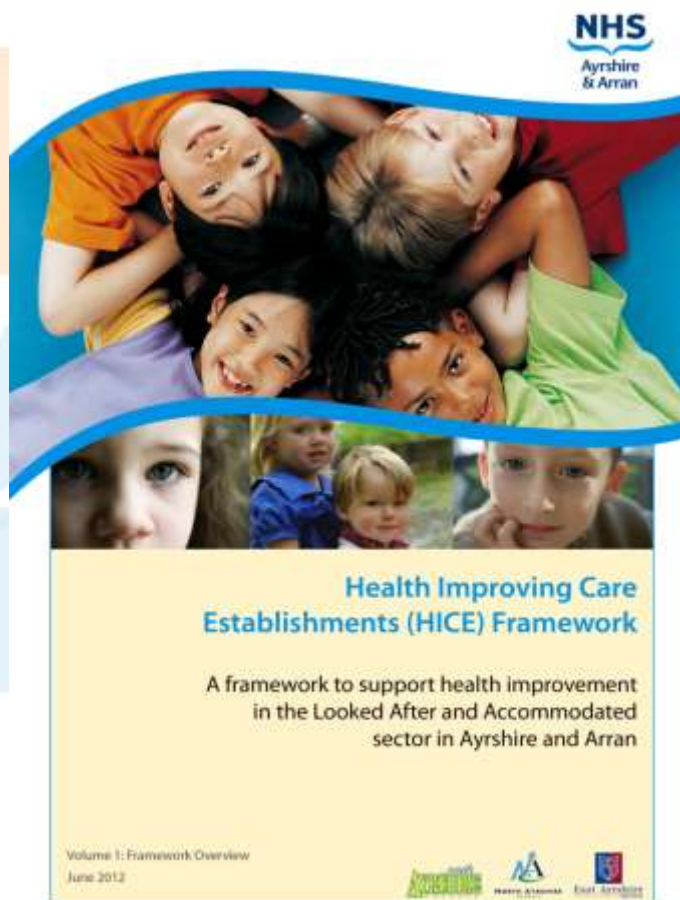
- Builds from an evidence base – hospitals, schools, prisons.
- Encourages a shared vision and responsibility through wide ranging partnership working.
- Offers an approach to reducing health inequalities and promoting social inclusion.
- Underpins a **Health Improving Care Establishment Framework**.

Ayrshire Developments

- NHS Health Scotland
- Establishment of a pan-Ayrshire HICE Core Group
 - NHS A&A
 - North Ayrshire Council
 - East Ayrshire Council
 - South Ayrshire Council
 - Care Inspectorate



HICE Framework Overview



Framework Aims

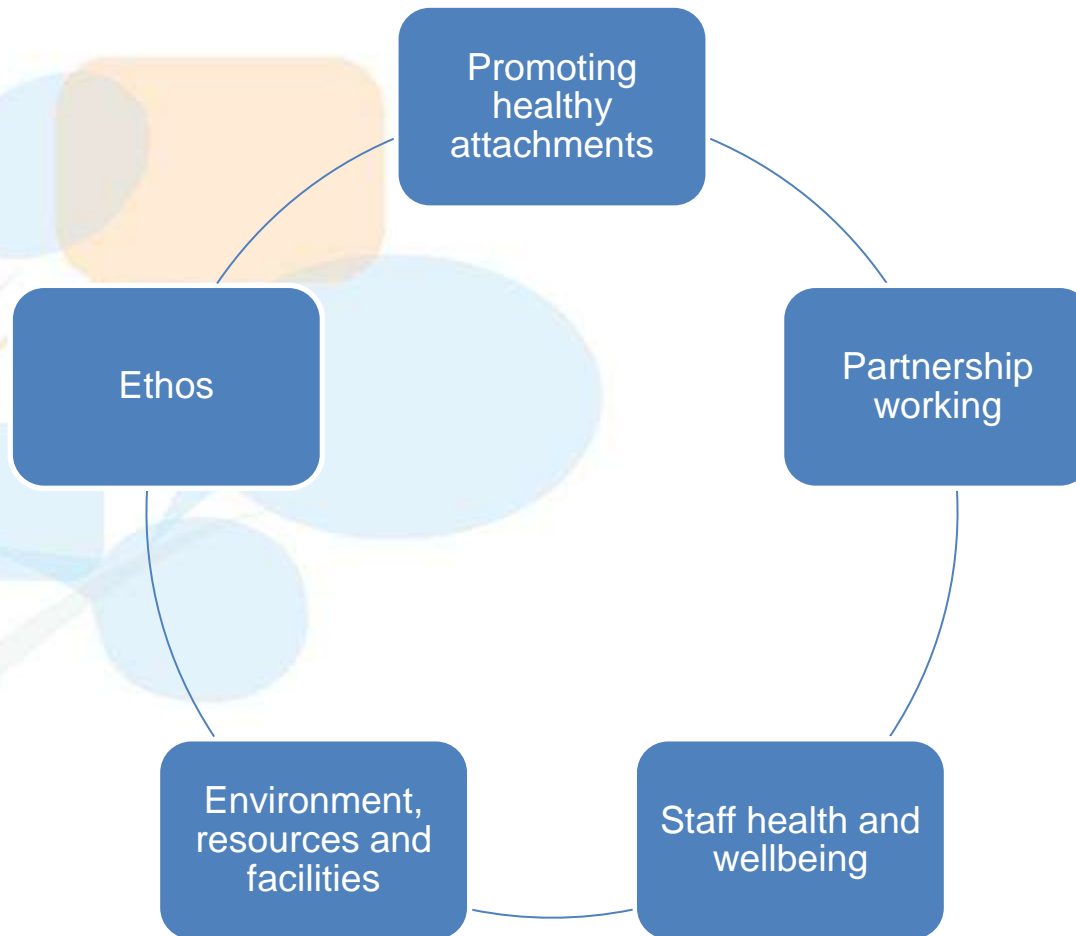
- To provide a structure from which health promotion can be directed
- To support services to build on good practice and identify areas for HI development
- To provide a forum for sharing good practice
- Encourage consideration of health in its widest context

Framework Strengths

- Pan-Ayrshire model
- Closely aligned to GIRFEC
- Places individual at the centre
- Consultation with staff and young people



HICE Key Sections



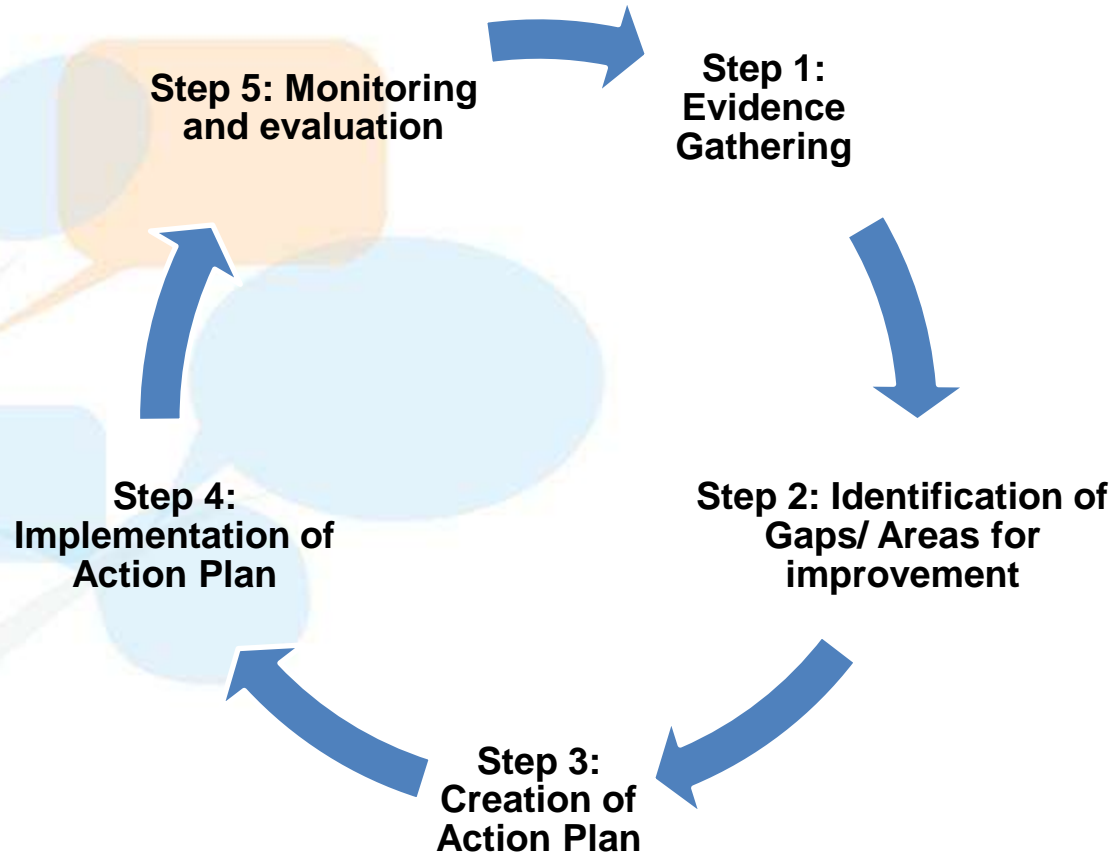
Outcomes and Indicators

- Each section has a number of outcomes and a number of suggested indicators
- All outcomes and indicators have been mapped to:
 - GIRFEC wellbeing indicators;
 - We Can and Must Do Better;
 - National Care Standards; and
 - How Good is our Throughcare and Aftercare Service?

Ethos example...

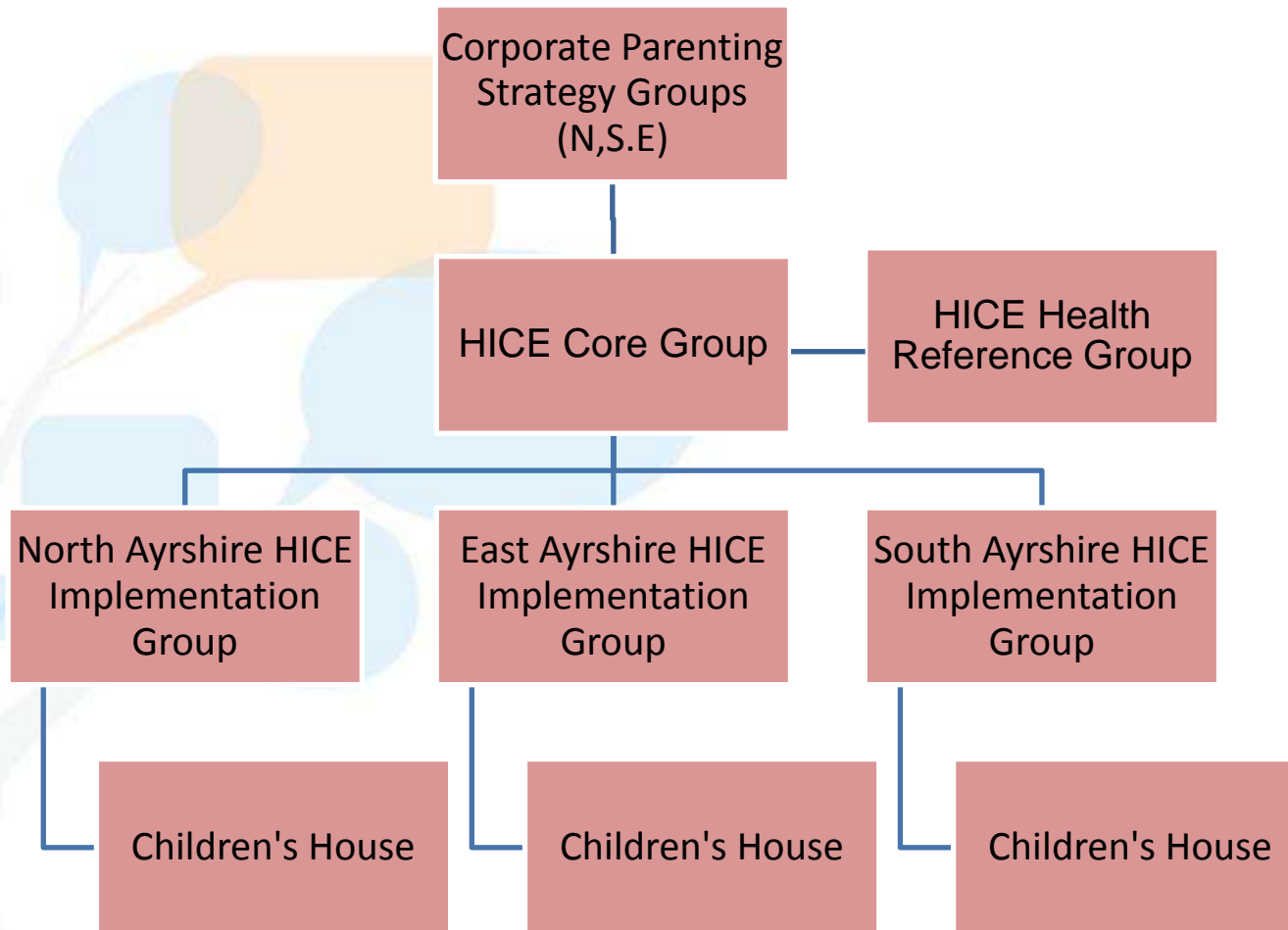
	Outcome	Indicator
2.2	The staff team take a holistic approach to health and wellbeing and is committed to improving the health and wellbeing of all young people, staff and the wider community.	<ul style="list-style-type: none"> • All staff have an understanding of the HICE Framework and have a level of responsibility for ensuring it is progressed. • The link between a healthy care establishment and its role in promoting all aspects of healthy lifestyles is explicit and recognised by all staff. • Staff have opportunities to develop their knowledge and understanding of specific health topics through training identified within Personal Development Plans.
2.3	All members of the children's home are involved in the development of a health promoting care establishment	<ul style="list-style-type: none"> • Mechanisms are in place to ensure all staff and young people are consulted with in relation to the home's decision making processes, including policy development. • A health group is established to take forward the framework, with appropriate representation from staff and young people. • Parents and carers are encouraged and supported to be involved in health promoting activities within the children's houses. • Policies on a range of topics are developed in consultation with staff, young people and parents and in line with national and local guidance and are regularly reviewed and, when necessary, updated. Topics may include: physical activity, smoking, healthy eating, anti-bullying, alcohol, health and safety.

Implementation Process



Units/ houses must also demonstrate how they have engaged with C&YP throughout the planning process.

Governance



Current Position

- All local authority units involved
- Evidence gathering and gap identification completed
- Action plans developed and being implemented
- One private provider
 - Early adopter site



Care Inspectorate

- Member of the HICE Core Group
- Fully supportive of the process
- Link to review of National Care standards
- Future pilot within Ayrshire of HICE integration within the inspection process

Next steps...

- Assessment of framework impact
 - Consultation with young people, staff and partners
 - Looking at existing measurement tools to be able to show more explicit links to young people's health and wellbeing
- Integration with existing local planning and assessment tools (for 2014/15)



Next steps contd...

- Commence engagement work with foster carers
- Consider implications for kinship care and children looked after at home
- Feed into national process to inform HICE developments nationally



For more information...

- Joanne Inglis, Health Promotion Officer, NHS Ayrshire and Arran
 - JoanneInglis@nhs.net or 01294 323025
- Paul Murray, Unit Manager, Canmore Children's Unit, North Ayrshire Council
 - PaulMurray@north-ayrshire.gov.uk



Health Is Completely Enforceable

HICE Process

- Consultation with Young People
- Division of workload
- Evidence gathering
- Identification of gaps and areas for improvement
- Further consultation with Young People
- Production of Action Plan

Promoting healthy attachments

- What are the benefits to healthy attachments?
- How can these be supported and developed?
- What are the challenges in achieving these?
- Within the unit/through partnership

Ethos

- What are the benefits for promoting a healthy ethos?
- How can this be nurtured developed and supported?
- What obstacles exist to prevent a cultivation of a positive nurturing ethos?
- Within the unit/through partnership

Our Past Environment



Our Present Environment



Where are we now?

- How can environment contribute to health and wellbeing?
- What can you change in your own environment to improve this?
- Utilising your current space to encourage healthy outcomes within and outwith your control

Young People's Investment



Staff health and wellbeing

- Why does staff health and wellbeing impact on young people's care?
- What can be done to support staff health and wellbeing?
- What obstacles exist?
- Within the unit/through partnership

Partnership Working

- What are the benefits to partnership working?
- What examples of partnership working exist?
- What could be improved and what are the obstacles to this from within and outwith the unit?